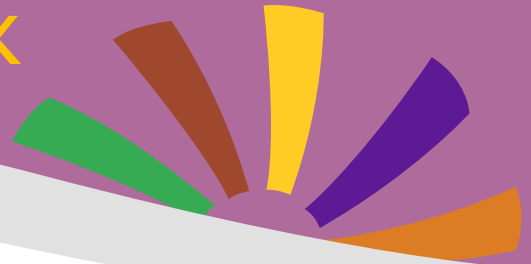


FAMILY SUPPORT NETWORK

Enhancing Quality of Life



CENTRAL SAN DIEGO

THURSDAYS ~ 6:30 - 8:30pm

(with some exceptions*)

2015

- SEPTEMBER 17 "Getting to Know You" (DSA/EFRC Services)
- OCTOBER 15 Learning through Play (Early Childhood)
- NOVEMBER 19 Healthcare & Down Syndrome
(Dr. Montgomery ~ San Diego Regional Center)

2016

- JANUARY 21 Disability Benefits (Social Security, etc.)
- FEBRUARY 18 San Diego Regional Center (Early Childhood)
- MARCH 17 IEP: Modifications & Accommodations
- APRIL 21 Early Childhood Communication Skills
- MAY 17* "Making it Work" Implementing the IEP

SUPPORT ~ INFORMATION ~ RESOURCES

Meet Families

Learn About Resources

Gain Knowledge



LIGHT DINNER
SUPERVISED PLAY AREA

EFRC 
Exceptional Family Resource Center

LOCATION: Harold J. Ballard Center, Room 2, 2375 Congress St., San Diego, CA 92110

QUESTIONS...

FACILITATOR: Mary Ann Voitzwinkler: (619) 594-7416 | mvoitzwinkler@mail.sdsu.edu

DSASDONLINE.ORG ~ EFRCONLINE.ORG